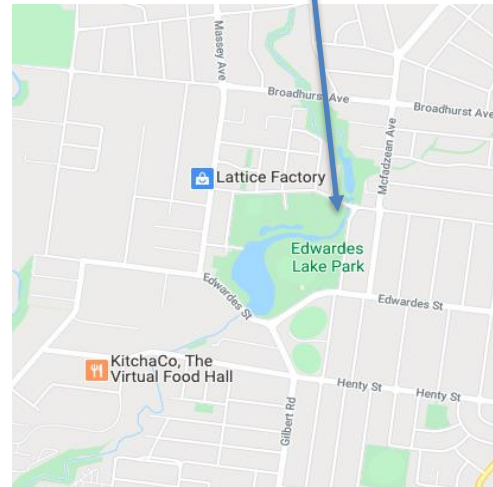


2019 Waterwatch Water Quality Site Summary Report Site Name, Code and Description

ME_YED070 Edgars Creek, upstream of Edwardes Lake, next to Reservoir Scout Hall, Leamington Street, Reservoir
Monitors: The Reservoir Frogs: Kyle, Terry, Francesc and Patrea

Monthly parameters

- Temperature
- pH
- Dissolved oxygen
- Reactive Phosphate
- Turbidity (water clarity)
- Electrical conductivity (salinity)
- Ammonium



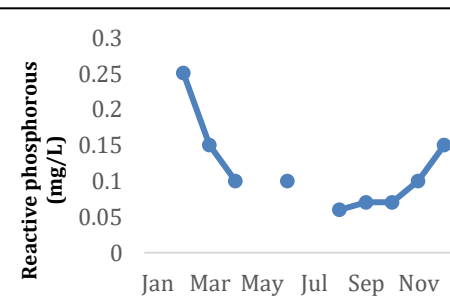
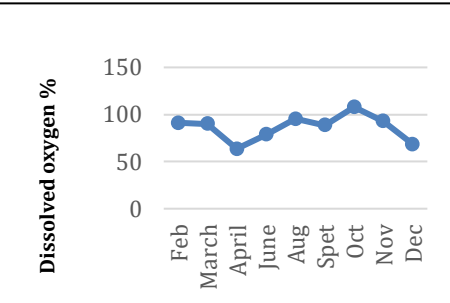
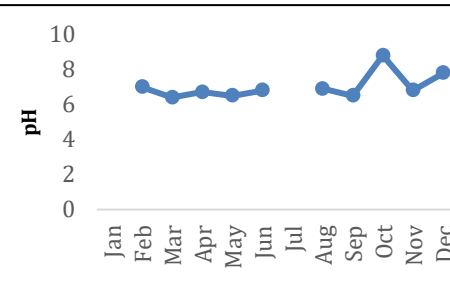
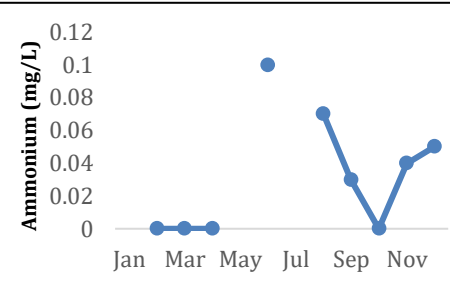
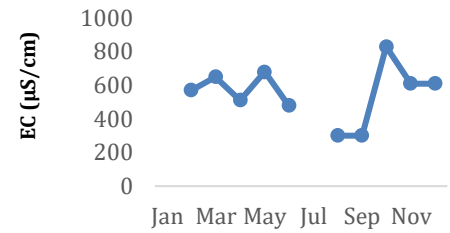
15th December 2019

Objectives

- Track water quality status
- Track stormwater impacts
- Track health of macroinvertebrate populations
- Identify industrial waste discharges from upstream

Site Introduction

Edgars Creek flows along a 17 km course from its headwaters in Wollert through the highly urbanised suburbs of Epping, Thomastown and Reservoir, and then joins Merri Creek in North Coburg. It is a seasonal creek, susceptible to drying out in some sections during the hot seasons and flooding during periods of high rainfall. The Edgars Creek in this area is very susceptible to stormwater pollution due to much of the catchment being in a highly urbanised area. Many pollutants seen include litter, high sediment (turbidity) and detergents which are all detrimental to aquatic plants and animals.



To look at further water quality data for this site visit the [Waterwatch online database](#) for and use the site code ME_YED070.

Summary

Salinity in the creek, represented by electrical conductivity, varied between 300–830 µS/cm. The SEPP trigger value (if a measurement exceeds the recommended trigger value, this signals a water quality issue) for this area is below 500 µS/cm. On seven visits out of ten, this limit was exceeded.

Ammonium levels were the highest in June, this could be owing in part to high levels of rainfall and thus run off entering the creek preceding the visit.

The pH levels were generally stable ranging from 6.4-7.8 which fall within the SEPP guidelines of 6.4-7.9. On one occasion in October, the pH peaked at 8.8 which is well above desired levels.

The Dissolved oxygen percentage fluctuated between 64% and 108% (out of a maximum of 130%). The SEPP 25th percentile limit is anything less than 70%.

Reactive phosphorus varied between 0.06 and 0.25 mg/L. Waterwatch guidelines categorize anything over 0.08 mg/L as being degraded and this was the case at Edgars creek six out of ten visits.

Turbidity levels ranged from 9-30 NTU. These measurements all fall within the SEPP recommended limit of 35 NTU.



2nd June 2019